

**Bcnvision**  
group



**Machine vision solutions and  
industrial drying**

**Bottling Industry**



# ABOUT US

Bcnvision Group is leader in industrial machine vision solutions in Spain. With a strong focus on technical innovation and a technical team which represents more than 60% of its workforce. The Bcnvision group develops intelligent systems for automatization, quality control and traceability in sectors like the food industry, pharmacy, automotive, packaging and logistic among others.

With a commercial and technical presence among all the national territory, Bcnvision Group stands out for their closeness to the client, their compromise with the service and their capacity of local response.



**Visit our website**

## A MULTIDISCIPLINARY AND COMPROMISED TEAM



+ than 100 people in constant formation, experimented, decisive and compromised with our client's success.



+ than 60% of our workforce is from our technical team.



We work day by day to provide you a fast and efficient service.



## SALES NETWORK THROUGHOUT THE IBERIAN PENINSULA



Central offices



Productive centre



Regional offices



Sales representatives



# OUR BRANDS

Bcnvision Group is formed by leader brands in machine vision, with a wide trajectory and experience in their sectors. Their common objective: offer powerful solutions, reliable and easy to use, adapted to the specific needs of each industry.



bcnvision

## **Bcnvision**

Leading integrator company on industrial machine vision, specialised in personalised solutions for multiple sectors. Their team designs, programs and realises the maintenance of tailored solutions for any kind of industry, always incorporating the most advanced technology to offer the most innovative, efficient and robust results.



NEVITEC

## **Nevitec**

Designs, manufactures, and programs standard machinery of machine vision for the food and logistic industry.

- » Primary product quality control
- » Online container inspection
- » Product classification
- » Full pallet reading
- » Individual pallet reading



pygsa  
Drying & Vision Systems

## **Pygsa**

Designs, manufactures, and programs standard machinery of machine vision and drying for the bottling and cosmetics industry.

- » 360° inspection of bottles or cans
- » Control de nivel de llenado
- » Fill level control
- » Label control
- » Code reading



inves  
control

## **Inves Control**

Designs, manufactures, and programs standard machinery of machine vision and drying for the pharmaceutical industry.

- » 360° Road Inspection
- » Product Inspection
- » Filling Control
- » Labelling control
- » Code and printing control
- » Traceability systems



## MACHINE VISION SOLUTIONS FOR THE BOTTLING INDUSTRY

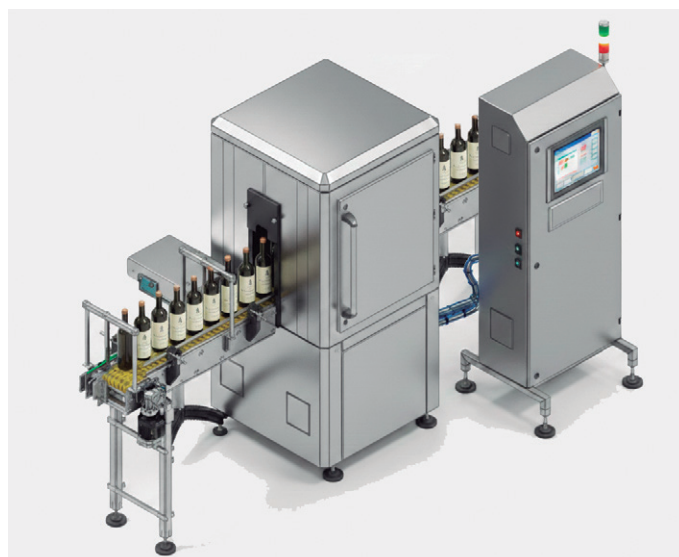


### » Checklabel 360 AI

#### 360° inspection of labels on cylindrical or rectangular containers

The CheckLabel 360 AI series enables 360° label inspection on containers without the need for container positioning.

- » Immediate format changes and creation of new formats in less than 10 minutes. Thanks to AI algorithms based on unsupervised neural networks, format updates are extremely simple and fast.
- » Compact design for high production rates, up to 60,000 units/hour.
- » **Cortex Vision Software:** Cortex 3.0 centralizes, manages, and scales your machine vision systems from a single multi-device platform.



#### 360° INSPECTION

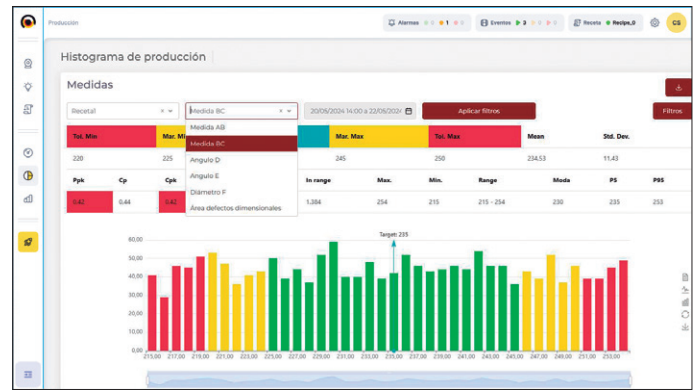


With a robust architecture designed for the industry of the future, it enables unified and efficient control of all vision equipment. In addition, it can be expanded with optional modules that enhance analysis, traceability, and process control.



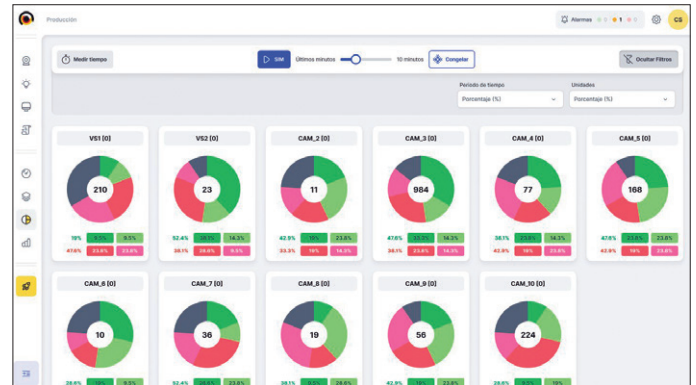
➤ **Enhancer | Database Statistics Module (CTX-DB)**

- Centralization and analysis of inspection data
- Historical data, reject rates, and statistical control
- Controlled tolerance adjustment
- Statistics by operator, shift, and type of defect
- Browser access and CSV export
- Installation on server or standalone PC for easy IT integration



➤ **Enhancer | Production Analysis Module (CTX-PRO)**

- Analysis of vision system performance in process
- Early detection of deviations
- Correlation of defects with production parameters
- Quality trends in 60-minute windows
- Improvement of process efficiency and stability



**Inspections:**

- Presence/absence of label, embossed logo, or cap-  
sule/cap
- Advanced label inspection. In addition to alignment,  
rotation, overlap, and label edge inspection, it inclu-  
des detection of complex defects such as small tears  
or wrinkles
- Code reading on label
- High-precision OCR/OCV, without font training and  
with minimal adjustments
- Matching of label with the format in production
- Print defects, detail matching (Detail Matching)



Our solution uses unsupervised neural networks, eli-  
minating the need to label images with defects. The  
system is automatically trained using “good” product  
samples, learning the normal pattern and detecting  
defective parts.\* It can also operate with supervised  
networks.

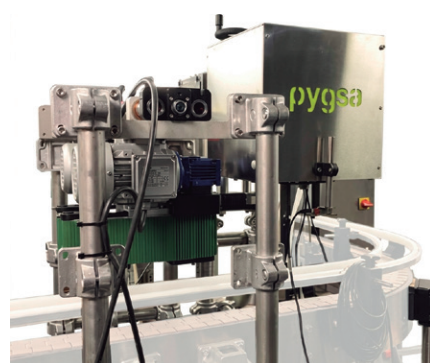
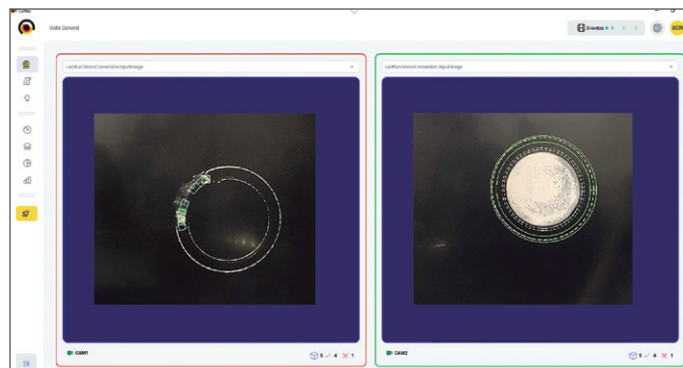


## » CheckNeck

### Control of finish breakage in glass bottles

CheckNeck is an advanced system to analyse, with maximum precision, the neck and upper rim of glass bottles and glass-type containers.

- » Detection of breakages, microcracks, and deformations in the container finish
- » Identification of defects that compromise sealing or product safety
- » AI-based technology for precise and reliable inspection
- » Integration into high-speed lines without affecting production
- » Exhaustive and continuous control of 100% of containers
- » Solution applicable to sectors: beverages, food, cosmetics, and pharma
- » Early detection of defects to prevent issues in final stages
- » Reduction of rejects and optimization of the production process
- » Guarantee of maximum safety and quality of the final container



## » CheckLevel

### Control of container fill level using AI

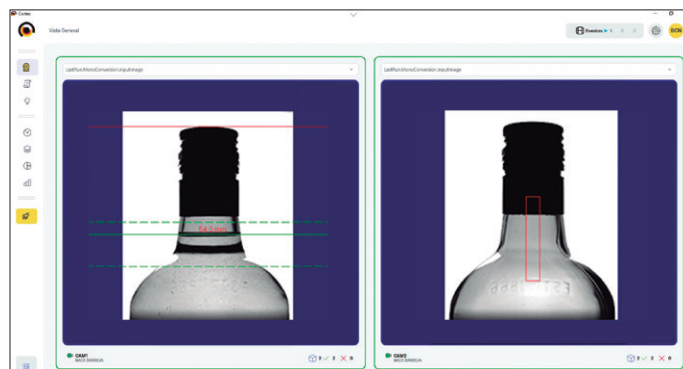
Check Level is an advanced machine vision system designed for precise control of the fill level in all types of bottles and containers.

It can perform simultaneous controls of:

- » Level
- » Presence of liquid
- » Filling conformity

It thus ensures consistent and homogeneous quality and can adapt to the specific characteristics of each product and process.

To ensure effective rejection of defective containers, **Check Level** can be integrated with different rejection systems.



## » CheckCap

### Cap quality control using AI

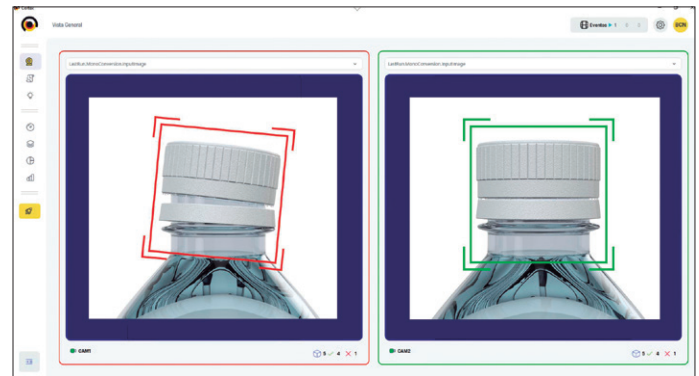
CheckCap verifies the integrity of the closure system:

- › Presence and type of closure (cap, lid, capsule, sprayer)
- › Correct positioning and geometry (height, inclination, and alignment)
- › Closure quality (threading, rolling, and tightness)
- › Physical integrity of the component (impacts, deformations, or defects)
- › Visual characteristics (colour and graphic elements)

The **CheckCap** inspection system is available for inspection of:

- › Cork/plastic caps on glass bottles
- › Capsules (pilfer-proof) on glass bottles
- › Tethered caps for PET bottles
- › Lids for containers

The system is capable of combining different inspections in a single unit.



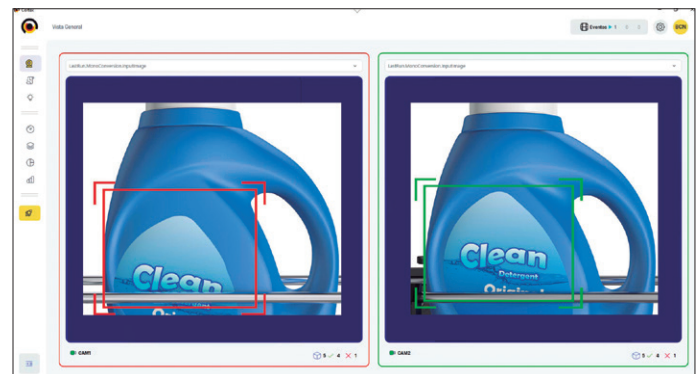
## » CheckLabel AI

### Label control on positioned containers

The system is specialized in the control of labels, screen printing, and shrink sleeves, both on correctly positioned cylindrical products and on square or geometrically defined containers conveyed on a belt. This makes it a versatile and robust solution for environments where the aesthetic and regulatory consistency of labelling is essential.

Main features:

- › Control of alignment, position, and double labels
- › Compatible with containers of any color with contrast
- › Easy operation via screen, keyboard, and mouse
- › Stainless, robust, and vibration-free structure
- › Status beacon and anti-trapping protections

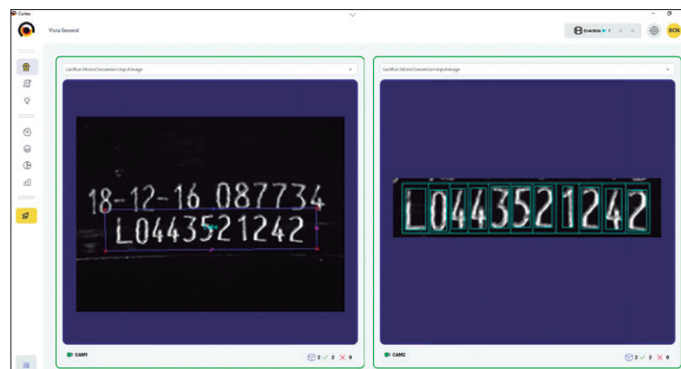


## » CheckCode AI

### Inspection of batch or date codes on products

CheckCode is an AI-based machine vision system for the automatic control of coding and batch marking, ensuring traceability and safety in the food and pharmaceutical sectors.

- » Code reading WITHOUT the need for training, as the system includes pre-trained fonts
- » Automatic verification of batch codes, expiration date, and best-before date
- » Real-time control using machine vision
- » Detection of errors: missing, illegible, incomplete, misaligned, or incorrect codes
- » Ensures compliance with safety and quality regulations
- » Integration into high-speed production lines
- » Improves product traceability
- » Reduction of rejects and coding errors
- » Optimization of the production process and control



## » CheckBox

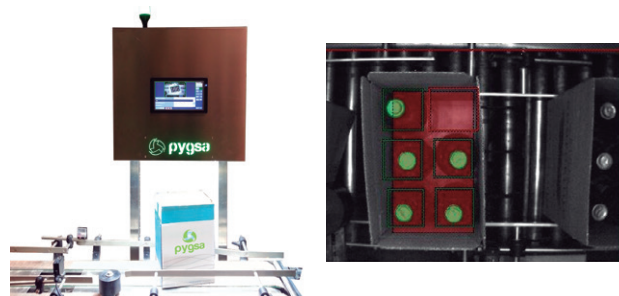
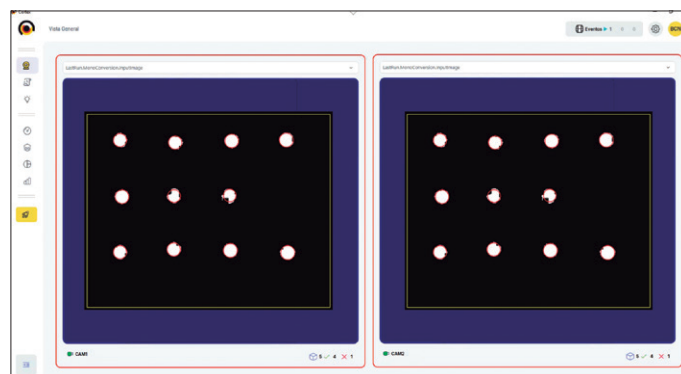
### Inspection of bottle cases at end of line

CheckBox is a solution designed for the control of bottle cases at the end of the line. Through very simple software, it enables the control of packed products before sealing.

#### Inspections:

- » Counting of bottles with capsule
- » Counting of bottles with metal cap
- » Detection of cardboard divider
- » Detection of bottles without capsule
- » Detection of open flaps (after case sealing)

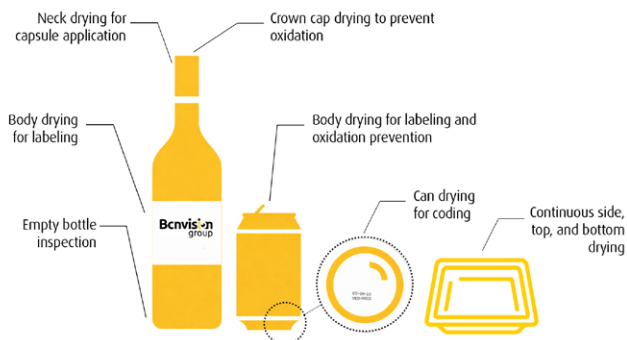
It can be installed with different rejection options: impact rejector, rejector with guides on conveyor, or rejector with pusher system, ensuring proper rejection of defective cases.



## DRYING SOLUTIONS

### » AirDryer Series

We offer industrial drying solutions for a wide variety of packaging formats. They are the perfect solution to eliminate moisture, condensation, and water, and to prevent oxidation, sealing, labelling, and hygiene issues.



#### » AirDryer Bottle and Jar

Drying solution for jars and bottles. Removes up to 98% of residual water, optimizing the labelling and packaging process and preventing oxidation and/or corrosion under the cap. Ensures perfectly dry containers before labelling or packing.

#### » AirDryer Can

Drying solution for cans. The system removes up to 99% of water in all types of cans, ensuring uniform drying before labelling, coding, or packaging, and preventing oxidation and/or corrosion, even at high production speeds of up to 120,000 cans per hour.

#### » AirDryer Tray

Drying solution for flexible packaging such as cups, trays, doypack, and flow pack, which allows the removal of surface water deposited on the sides, top, and bottom, continuously, enabling subsequent packaging or labelling operations.

The entire AirDryer series is easy to install and adaptable to existing lines.

Our systems provide between 40–60% more airflow

than other similar systems, allowing drying with lower power, generating significant cost savings over the system's lifetime.

Its high-power centrifugal blower delivers a constant and long-lasting airflow, with almost no maintenance required.

Depending on customer requirements, the systems can be:

» EL System: Semi-enclosed with panel-mounted motor

» LNL System: Fully enclosed



## TRACEABILITY

### » TRZ BOTTLE

#### Complete traceability for your bottles

Our TRZ Bottle traceability solution for bottling lines enables the identification and tracking of each bottle individually throughout the entire production process, from primary packaging to the final pallet.

By reading a unique code per product unit, the platform generates hierarchical traceability that links bottles, cases, and pallets in real time, ensuring full visibility of the production flow.

#### Key benefits:

- » Real-time traceability: each unit (bottle, case, pallet) is always linked and visible
- » Efficient data management: a complete history is generated, facilitating inventory, audits, and analysis
- » Regulatory compliance: compatible with demanding industry standards (including FDA and 21 CFR Part 11), ideal for regulatory audits
- » Logistics optimization: instantly identifies the contents of packages to streamline distribution and storage
- » Error and cost reduction automates data capture, minimizing manual errors and optimizing processes
- » Brand protection: unique product identification that makes counterfeiting more difficult and strengthens consumer trust
- » Scalable and adaptable: adapts to different production speeds and existing systems



*LOGISTICS*

» **Pallet Scanning**

**Full pallet reading**

Reading of multiple codes with a single reader. Easy installation, flexible configuration, and wide fields of view with a single system.

» **Pallet Scanning Nevitec:**

Multi-code reading on 1, 2, or 4 sides of a pallet in the same station. Easy installation, flexible configuration, and wide fields of view with a single system.



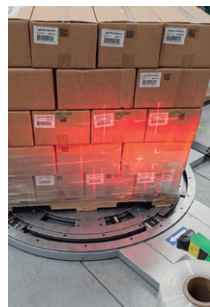
» **Dock Door:**

Multi-code reading on 1, 2, or 3 sides and variable height, at warehouse entry or exit, ensuring that the shipped or received goods match the documentation.



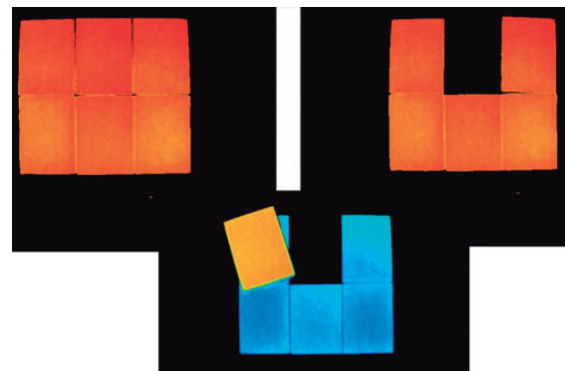
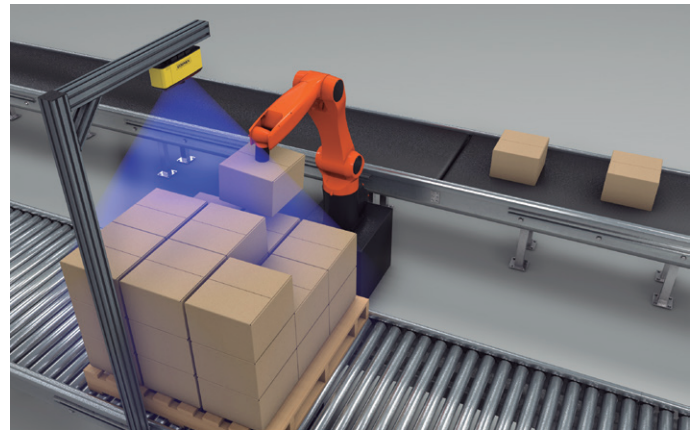
» **Shrink Wrap:**

Multi-code reading in the wrapping machine to avoid identification errors caused by packaging. Depending on the pallet configuration, one or more readers will be required.



» **Palletized - Depalletized**

Palletized & Depalletized is our advanced machine vision solution designed to guide robots in palletizing and depalletizing processes in a precise and efficient way. Depending on the requirements of each application, the system can combine 2D vision, 3D vision, and artificial intelligence to adapt to any type of product or pallet.





[bcnvisiongroup.com](http://bcnvisiongroup.com)

**Adding strengths  
to multiply results**



**+34 93 719 49 35**

**[info@bcnvisiongroup.com](mailto:info@bcnvisiongroup.com)**